

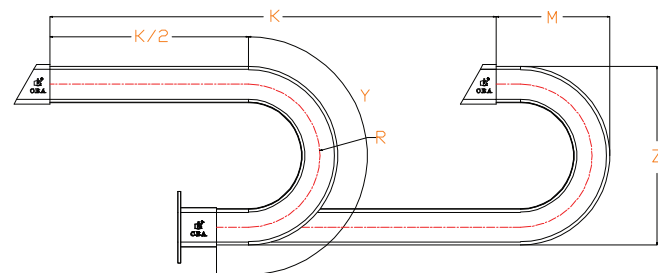
CABLE CARRIERS TUBUFLEX

Inner Height (A) 22 – 25 – 35 – 38 – 40 – 52 – 60 – 72 mm

Fully enclosed steel series. Should be used with supporting tray.

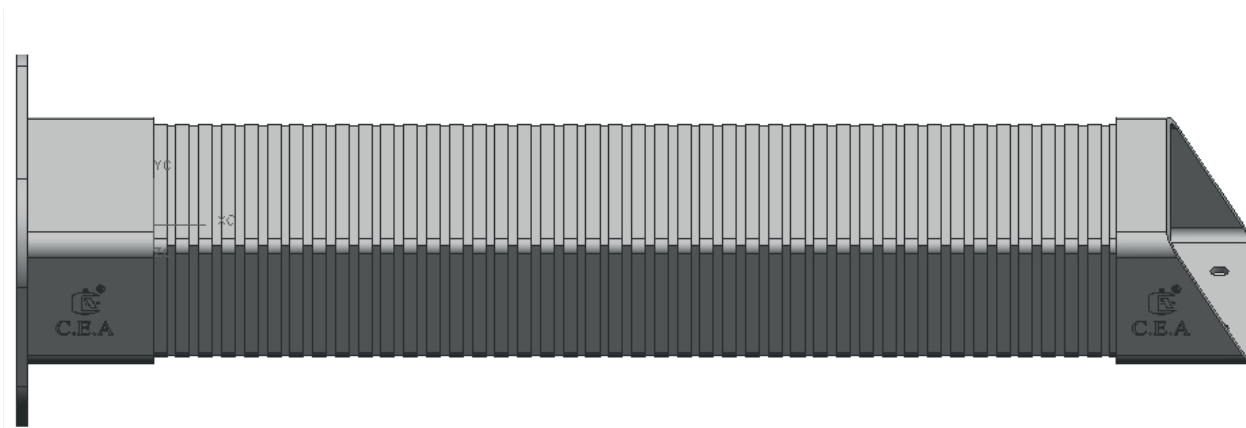
AXB	(CXD)	E	F	G	H	I	L	J	K	N	P	S	X	T	Q	R	(KG/M)
CSK 22 X 32	27.5 X 36.7	38	18	25	22	10	23	60	20	40	78	60	55	38	5.5	70	1.3
CSK 25 X 50	31.5 X 54.5	58	30	35	25	10	33	70	25	50	90	75	60	45	5.5	90	1.75
CSK 35 X 60	40.1 X 64.4	69	40	45	25	10	44	70	30	50	100	80	70	52	5.5	100	2.1
CSK 38 X 73	43.7 X 77.8	82	50	55	35	10	47	90	35	55	110	85	82	62	6.5	110	2.36
CSK 40 X 80	45.4 X 84.7	89	50	65	50	15	49	120	40	60	120	100	90	68	9	120	2.5
CSK 52 X 102	57.5 X 107.8	113	65	80	50	15	63	130	45	60	140	120	100	80	9	140	2.85
CSK 60 X 120	67.5 X 127.7	132	90	90	80	20	71	150	45	70	170	146	110	84	9	180	3.15
CSK 60 X 130	65.1 X 134.4	141	95	100	90	20	71	160	50	75	180	150	120	90	9	180	3.25
CSK 72 X 162	78.4 X 168.2	184	120	120	100	20	82	180	60	80	180	180	130	100	9	210	4.5

AXB mm	R mm	Z mm	M mm	Y mm
CSK 22X32	70	167.5	84	220
CSK 25X50	90	211.5	106	283
CSK 35X60	100	240	120	314
CSK 38X73	110	264	132	345
CSK 40X80	120	285.5	143	377
CSK 52X102	140	337.5	169	440
CSK 60X120	180	427.5	214	565
CSK 60X130	180	425	212.5	565
CSK 60X162	210	498.5	249	660

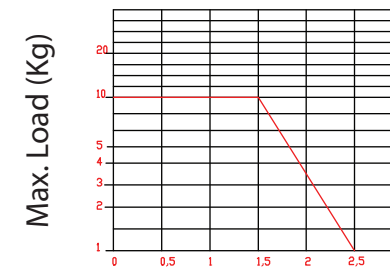


L: Total length to be used
K: Movement distance
Y: Radius

$$L: \frac{K}{2} + Y$$



IMPORTANT POINTS

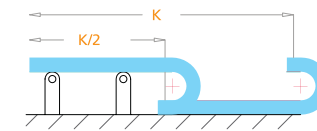


SÇK040

Self-supporting Capacity Diagram

Self-supporting capacity of the cable carrier according to weight of the cables and hoses

$$\frac{K}{2}$$



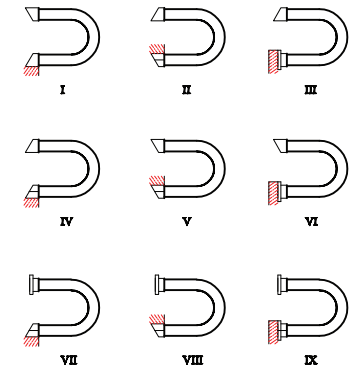
How to use the supporting rollers

$$\frac{K}{2}$$

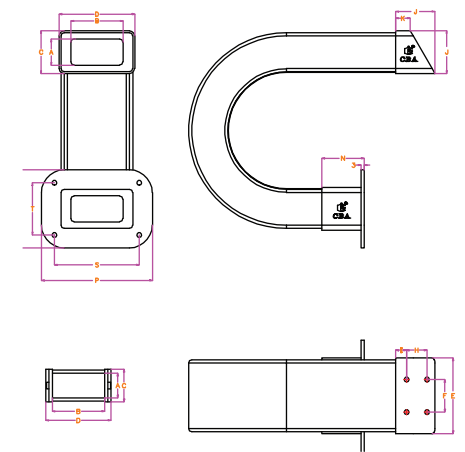
Should be used when the conditions of K/2 self supporting conditions are exceeded.

How to choose end bracket

End brackets are the parts to be used to fix the cable carrier to the machine or equipment



Should be attached to the both ends of the cable carrier



Please refer to the next page for the dimensions