

# SA3

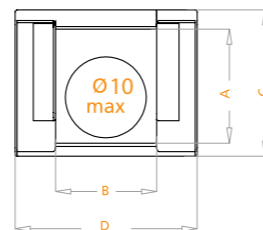
## CABLE CARRIERS LIGHT SERIES

| Inner Height (A) 15mm   | Code         | Radius | (A)mm | (B)mm | (C)mm | (D)mm | Weight Kg/Mt |
|---|--------------|--------|-------|-------|-------|-------|--------------|
| <ul style="list-style-type: none"> <li>No cover (cap) on top and bottom sides</li> <li>Should be used in supporting trays</li> <li>Suitable for short movement lengths</li> </ul> | SA3 010 R_01 | 48     | 15    | 10    | 18    | 18    | 0.196gr      |
|   |              |        |       |       |       |       |              |
|   |              |        |       |       |       |       |              |
|   |              |        |       |       |       |       |              |

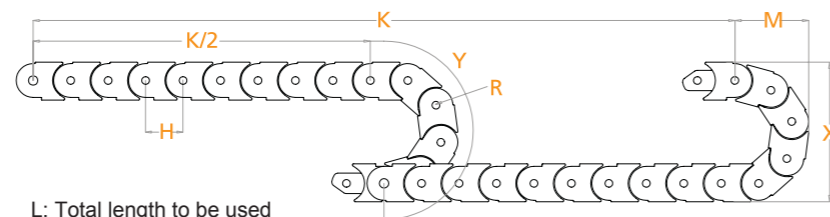
Maximum working speed :5M/S

Radius MUST be given in your orders. Example:

SA3 15 R48



| R mm | H mm | X mm | M mm | Y mm |
|------|------|------|------|------|
| 48   | 18   | 110  | 75   | 187  |
|      |      |      |      |      |
|      |      |      |      |      |

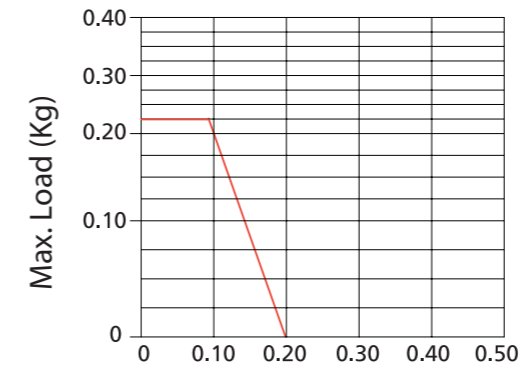


L: Total length to be used  
K: Movement distance  
Y: Radius

$$L: \frac{K}{2} + Y$$



### IMPORTANT POINTS

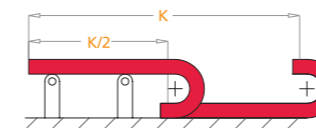


$\frac{K}{2}$  Max. Length without support

#### Self-supporting Capacity Diagram

Self-supporting capacity of the cable carrier according to weight of the cables and hoses

$$\frac{K}{2}$$

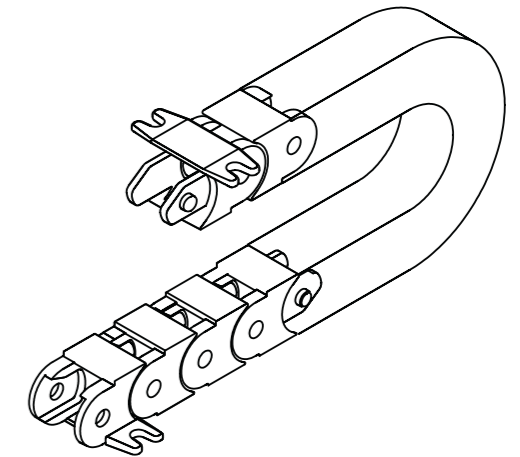


How to use support rollers:  
• Support rollers should be used after 0.5 meter

### How to choose end bracket

#### End bracket

End brackets are the parts to be used to fix the cable carrier to the machine or equipment .



Should be attached to the both ends of the cable carrier.

| CABLE CARRIER CODE | END BRACKET CODE | A | B |
|--------------------|------------------|---|---|
| SA3 15 R48         | SA3 B01          | X | X |
|                    |                  |   |   |
|                    |                  |   |   |
|                    |                  |   |   |

