

SA1

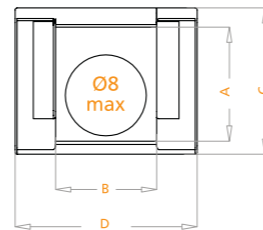
CABLE CARRIERS LIGHT SERIES

Inner Height (A) 10 mm	Code	Radius	(A)mm	(B)mm	(C)mm	(D)mm	Weight Kg/Mt
No cover (cap) on top and bottom sides • Should be used in supporting trays • Suitable for short movement lengths	SA1 010 R_01	18-25-35-48	10	10	14	14	0.112gr

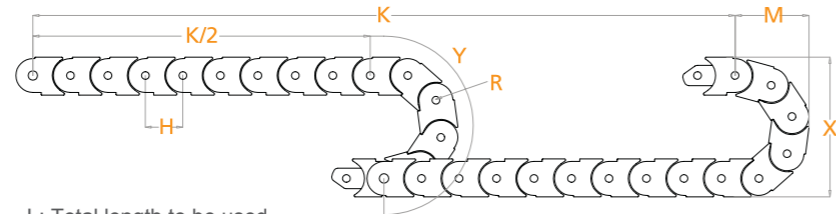
Maximum working speed :5M/S

Radius MUST be given in your orders.Example:

SA1 010 R35



R mm	H mm	X mm	M mm	Y mm
18	17	50	42	91
25	17	64	49	113
35	17	84	59	144
48	17	110	72	185

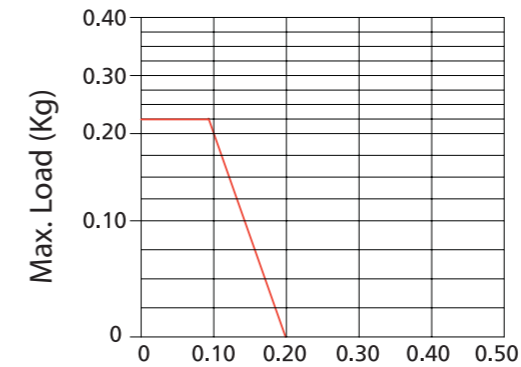


L: Total length to be used
 K: Movement distance
 Y: Radius

$$L: \frac{K}{2} + Y$$



IMPORTANT POINTS

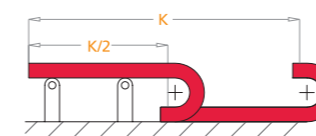


$$\frac{K}{2} \text{ Max. Length without support}$$

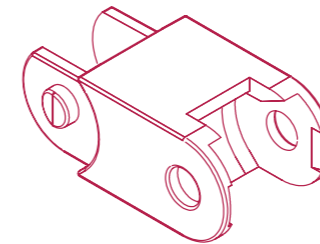
Self-supporting Capacity Diagram

Self-supporting capacity of the cable carrier according to weight of the cables and hoses

$$\frac{K}{2}$$



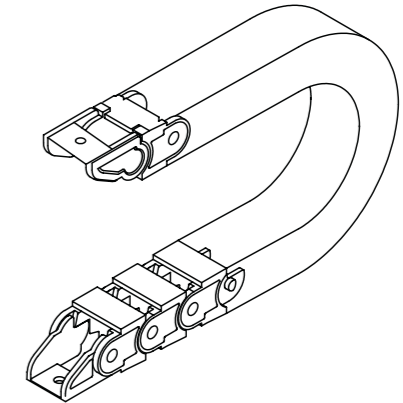
How to use support rollers:
 • Support rollers should be used after 0.5 meter
 • End brackets are metal



How to choose end bracket

End bracket

End brackets are the parts to be used to fix the cable carrier to the machine or equipment .



Should be attached to the both ends of the cable carrier

CABLE CARRIER CODE	END BRACKET CODE	A	B
SA1 10 R01	SA1 B01	X	X

