

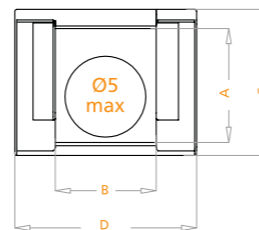
CABLE CARRIERS LIGHT SERIES

Inner Height (A) 8mm	Code	Radius	(A)mm	(B)mm	(C)mm	(D)mm	Weight Kg/Mt
<ul style="list-style-type: none"> No cover (cap) on top and bottom sides Should be used in supporting trays Suitable for short movement lengths 	SA0 08 R_01	18-25-35-48	8	8	12	12	0.112gr

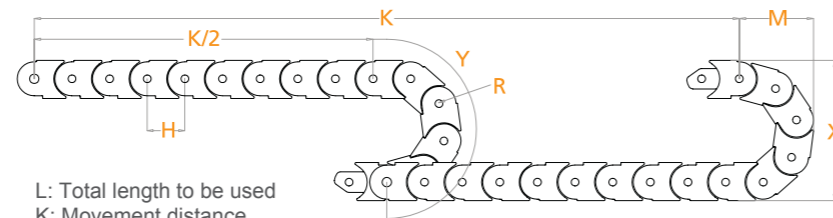
Maximum working speed :5M/S

Radius MUST be given in your orders.Example:

SA0 08 R25



R mm	H mm	X mm	M mm	Y mm
18	17	48	41	91
25	17	62	48	113
35	17	82	58	144
48	17	108	71	185

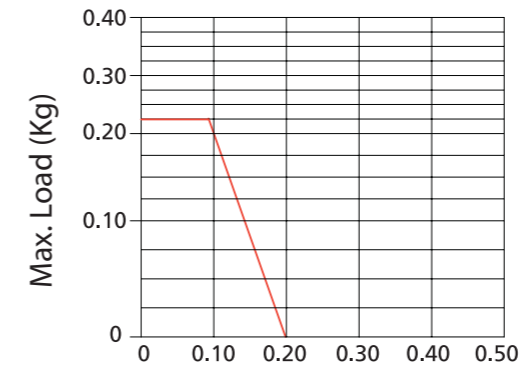


L: Total length to be used
K: Movement distance
Y: Radius

$$L: \frac{K}{2} + Y$$



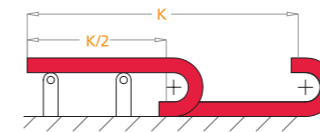
IMPORTANT POINTS



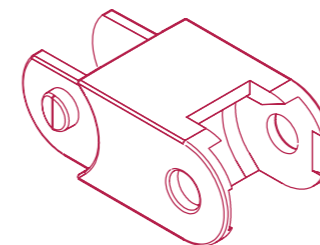
$$\frac{K}{2} \text{ Max. Length without support}$$

Self-supporting Capacity Diagram

Self-supporting capacity of the cable carrier according to weight of the cables and hoses $\frac{K}{2}$



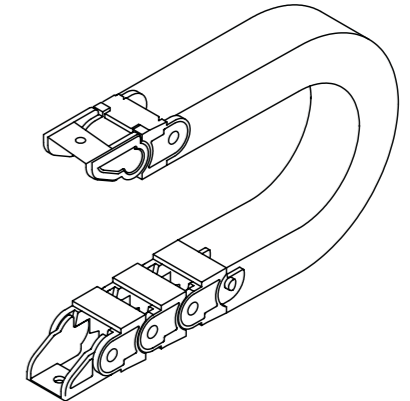
How to use support rollers:
• Support rollers should be used after 0.5 meter
• End brackets are metal



How to choose end bracket

End bracket

End brackets are the parts to be used to fix the cable carrier to the machine or equipment



Should be attached to the both ends of the cable carrier

CABLE CARRIER CODE	END BRACKET CODE	A	B
SA0 08 R01	SA0 B01	X	X

